

# WS Series

## Wall speakers

The WS series are elegant surface mount and in-wall loudspeakers, designed for use in any possible application where is need for a sound system without obvious speakers. They are made of high quality components, to ensure a beautiful warm sound reproduction of music and speech. Furthermore, they all have an integrated 100V line transformer with several power tapings, whereby they can be used in standard low impedance Hi-Fi or larger 100V PA systems. The cone is moisture-proof treated, so they can be used in damp rooms or in outside applications, the grill and housing can be painted to integrate seamlessly into your interior.



### WS500

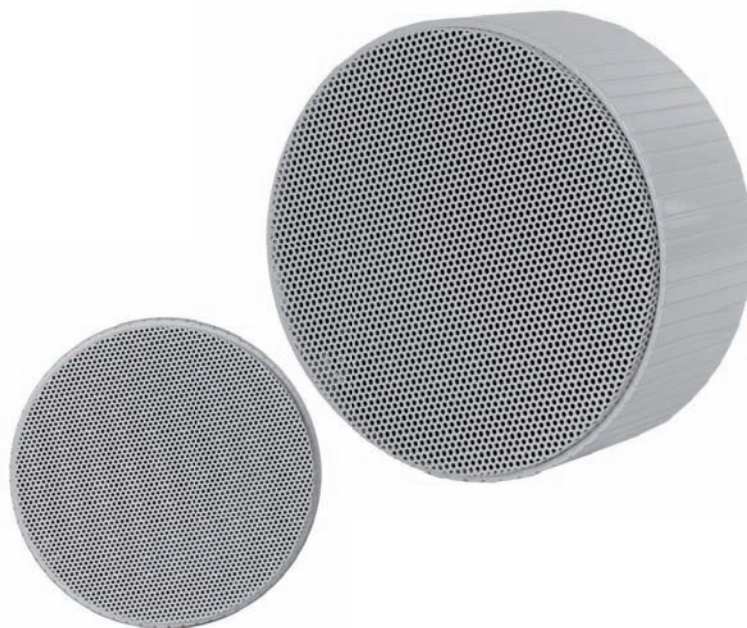
The WS500 is a 10 Watt design wall loudspeaker with a curved ABS shape and a white coated aluminium grill, making it perfect for use in special design applications.

It is fitted with a 5 1/2" moisture proof broadband loudspeaker and has power tapings for 10 W and 5 W at 100V.



### CSS556

The CS556 is a 10 Watt surface mount loudspeaker that is designed to be used in all kinds of applications where there is no possibility to integrate speakers into walls or ceilings. It features a 6" full range loudspeaker which is suitable for background music an announcements and is fitted with a line transformer with power taps for 6W and 3W.



#### Technical Highlights

	Max Power	RMS Power	Max SPL	Sensitivity 1W/1m	Power Taps	Frequency Response ±3 dB	Dimensions (W x H x D)	Weight
WS500	20 W	10 W	99 dB	91 dB	10 / 5 Watt	110Hz – 13kHz	240x340x100 mm	1.62 Kg
CSS556	15 W	10 W	99 dB	91 dB	6 / 3 Watt	110Hz – 18kHz	ø170x79 mm	2.4 Kg