

WS524–WS524/D

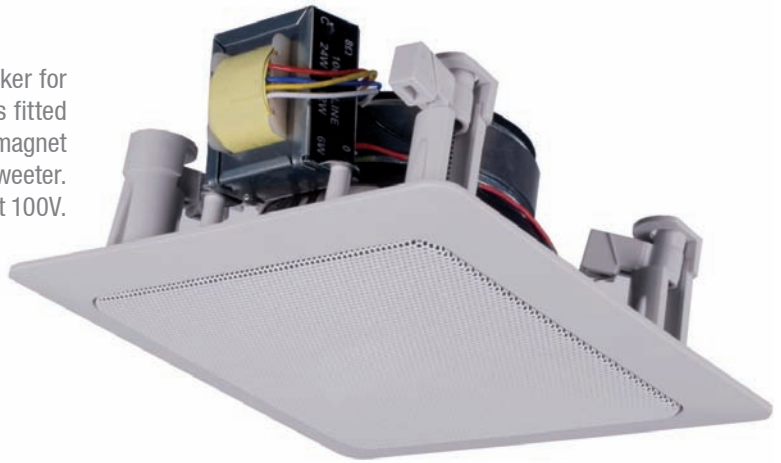
The WS524 is a 2–way elegant square in–wall loudspeaker for high–quality installation. The loudspeaker combination is fitted with a 4 ¾" low frequency speaker with a very powerful magnet and a coaxially placed 1" silk soft dome high frequency tweeter. There are power tapplings provided for 24W, 12W and 6W at 100V.

(Also available in 16 Ohm version: WS524/D)

100
VOLT

8
OHM

16
OHM



WS624–WS624/D

The WS624 is a 2–way rectangular in–wall loudspeaker for high–quality installation. The loudspeaker combination is fitted with a 4 ¾" low frequency speaker with a very powerful magnet and a coaxially placed 1" silk soft dome high frequency tweeter. There are power tapplings provided for 24W, 12W and 6W at 100V.

(Also available in 16 Ohm version: WS624/D)

100
VOLT

8
OHM

16
OHM

