

MULTICOM PRO-XL

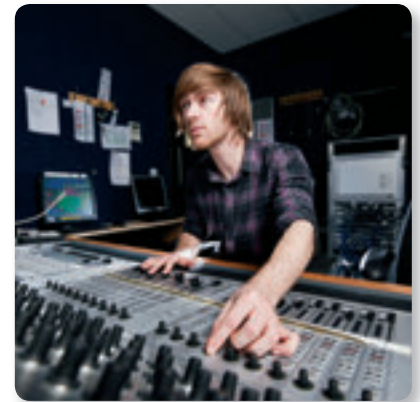
MDX4600

Reference-Class 4-Channel Expander/Gate/Compressor/Peak Limiter with Dynamic Enhancer and Low Contour Filter



- Switchable IKA (Interactive Knee Adaptation) program-adaptive compression circuitry combines the advantages of hard-knee and soft-knee characteristics
- IRC (Interactive Ratio Control) expander/gate circuitry for virtually inaudible noise suppression
- Switchable dynamic Enhancer for brilliant, lively audio even with heavy compression
- IGC (Interactive Gain Control) peak limiting circuitry combines clipper and program limiter for reliable and inaudible protection against signal peaks
- Switchable Low contour filter prevents "pumping" due to low-frequency dominated compression
- Stereo couple function selectable for channels 1/2 and 3/4
- Separate 8-segment LED meters for input/output levels and gain reduction
- Selectable operating level (+4 dBu/-10 dBV)
- Servo-balanced inputs and outputs with 1/4" TRS and gold-plated XLR connectors
- High-quality components and exceptionally rugged construction ensure long life
- 3-Year Warranty Program*
- Conceived and designed by BEHRINGER Germany

The reference-class MDX4600 is a marvelous 4-channel Expander/Gate/Compressor/Peak Limiter that is ideal for: compressing mono/stereo signals and providing virtually inaudible noise suppression, without loss of high frequencies; increasing vocal presence and energy; and limiting, or smoothing out extremely-high signal peaks. Additionally, the MDX4600 features an integrated Dynamic Enhancer, De-Esser, and Low-Contour filter to provide the ultimate in signal enrichment. Put simply, the MDX4600 can do amazing things for your vocals or instruments – providing virtually everything you need for studio-quality dynamics processing!



MULTICOM PRO-XL

MDX4600

Reference-Class 4-Channel Expander/Gate/
Compressor/Peak Limiter with
Dynamic Enhancer and
Low Contour Filter

Audio Dynamics Toolkit

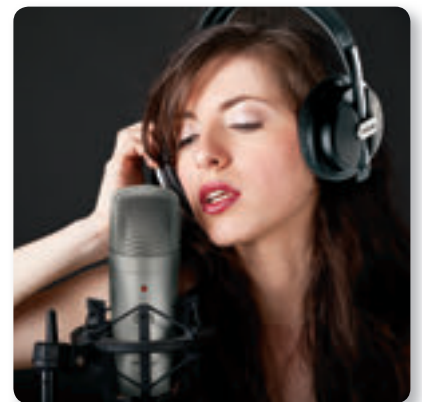
Here are just a few of the MDX4600's outstanding capabilities:



- **Switchable IKA** (Interactive Knee Adaptation) – provides program-adaptive compression, combining all the advantages of both hard and soft-knee compression
- **Enhancer** – lets you emphasize the Bass, Midrange and Hi output at selectable frequencies for maximum punch, clarity and detail – without raising overall volume
- **IGC** (Interactive Gain Control) – combines clipper and program limiter for reliable, inaudible protection against signal peaks
- **De-Esser** – “must-have” tool with switchable male/female voice recognition for reducing sibilance, while preserving natural voice timbre – often used to enhance upper-mid, to high-frequency smoothness in vocals, drum overheads, strings, etc.
- **Side Chain** – allows insertion of graphic/parametric EQ to reduce specific frequencies – also often used to “tighten up” tracks using an internal or external signal to trigger compression, or gating of signal being processed (ex. using bass guitar signal to un-gate kick drum)
- **Stereo Couple** – links $\frac{1}{2}$ and $\frac{3}{4}$ channels, allowing dials and switches of Channels 1 and 3 to provide dynamics control over Channels 2 and 4, respectively (true stereo processing)

Options Abound

The MDX4600 features amazingly-accurate, 8-segment LED meters for In/Out Level and Gain Reduction, switchable +4 dBu or -10 dBV operating level, Side Chain I/O, and servo-balanced XLR and $\frac{1}{4}$ " Inputs and Outputs. Best of all, the MULTICOM PRO-XL MDX4600 takes up just a single rackspace.



MULTICOM PRO-XL MDX4600

Reference-Class 4-Channel Expander/Gate/
Compressor/Peak Limiter with
Dynamic Enhancer and
Low Contour Filter



Sound Value

The incredible MDX4600 is the ideal solution for becoming the master of your dynamics. With its flexible routing options, all the I/O you could ask for, plus a host of other professional features – the MDX4600 is an exceptional tool for your live shows – and an absolute “must-have” for your studio! Check out the MULTICOM PRO-XL MDX4600 at your [BEHRINGER](#) dealer, or place your order online today.

You Are Covered

We always strive to provide the best possible Customer Experience. Our products are made in our own [MUSIC Group](#) factory using state-of-the-art automation, enhanced production workflows and quality assurance labs with the most sophisticated test equipment available in the world. As a result, we have one of the lowest product failure rates in the industry, and we confidently back it up with a generous [3-Year Warranty program](#).

